

# A Novel Approach to Find Circular Object from various shaped objects in an Image.

<sup>1</sup>Tejpal Sharma, <sup>2</sup>Manvinder Sharma, <sup>3</sup>Jagbir Singh, <sup>4</sup>Joginder Singh  
<sup>1, 2, 3</sup> Assistant Professor, <sup>4</sup>Professor

<sup>1,2,3,4</sup> CGC College of Engineering, Landran, Mohali, India

<sup>1</sup>tejpal.coecse@cgc.edu.in, <sup>2</sup>manvinder.coecse@cgc.edu.in, <sup>3</sup>jagbir.coecse@cgc.edu.in, <sup>4</sup>cgccoe.appsc.jsa@gmail.com

**Abstract:** In the computer vision, fast and accurate detection of an object is challenging. Detecting a circular object in a cluttered image has always been a problem. Circular object detection has wide applications in the field of biometrics, automobile and other mechanical production industries. The traditional existing circular object detection are maximum likelihood estimation (MLE) and voting based methods. The voting based methods have high memory requirements and more computational complexity while these are less sensitive to noise. MLE approach consumes less memory and are efficient in terms of computational complexity but these approaches are more prone to noise. This paper proposes modified Hough transform based algorithm for detection of circular objects in cluttered image. The algorithm efficiently detected the circular objects in the image with very less computational time and less memory consumption.

**Keywords:** Circular detection, MLE: Hough Transform, CHT, conversion of image, algorithms, circular object.

## I. INTRODUCTION

In computer vision, extracting the features of the image and detecting the shape, location and size of the image is one of the most challenging tasks. The object taken into consideration is not always of the desired one. It may come in pre-defined shapes and sizes. So it becomes very essential to determine the shape of the object in certain applications such as biometric, automobile, production, mechanical industries, microwave engineering, robotic systems and archeology [1-6]. The position, size and orientation of the object is estimated with the help of certain parameters of the object itself. The significant features of the object are detected. Then these parameters of the detected features of the object identify the shape, location and orientation of the object [7-8]. This is a very common way of performing the object recognition. The outline of many industrial objects can be of circular arcs or straight lines. So it becomes necessary to identify the shape of the object by extracting certain features of the object whose parameters help to locate the exact shape of the object. The commonly performed detection with Hough Transform is line detection but the circular object detection is somewhat complicated than line detection [9]. The orientation and location of the object can be defined with just one single circular arc. This defines the importance of circular object detection [10-12]. There are many approaches for finding out the circular fittings in any clutter of objects. One approach finds the circular object statistically where the list of measurements are the noisy circular points which is the Maximum Likelihood Estimator (MLE) [13-14]. Other approach of circular object detection is based on the object which is the Circular Hough Transform (CHT) [15-16]. The analysis of MLE is very difficult that becomes the main disadvantage. The iteration of the known algorithms in MLE makes it very difficult to analyze and compute the Gaussian errors in the circular object detection [17]. Whereas in CHT the main concept is

that the space between the image and the parameter is mapped. CHT is free from noise and distortion and is quite robust in nature. The algorithm in CHT is very simple and feasible to implement. The sensitivity and specification of the circular object is improves using the modified Circular Hough Transform [18]. The algorithm used in CHT detects the shape in the image through extracting the parameters of the features being detected. An array is used in CHT to represent the coordinates of the circle in the form of dimensions. The value of the radius of the circle is the dependent variable in CHT. In the circular detection of any binary image, it is required that process should be accurate and robust. CHT fulfills almost all the necessities of the circular object detection with improved computational power relative to other method and algorithms used for object detection. The errors and the noise are being highly reduced in order to achieve an accurate result of the circular object that is being detected in the clutter of images [19]. Further we have discussed different design steps to be followed for the detection of circular object.

Extracting circular objects from the images is one of the attention seeker tasks mostly used in industrial applications. Variations in the original CHT has been proposed a lot of times in order to get increased performance. For example GHT (Generalized Hough Transform) was proposed in which the parameters of the target object were replaced by look-up table. Arbitrary shapes were also detected using this approach. The hardware solution of CHT has also been provided which maintains the flexibility of the solution in software. CORDIC algorithm has been used to overcome the complexities of trigonometric operations. In this paper we have presented modified Hough Transform for detecting the circular shapes in a clutter.

## II. DESIGN FLOW

The flowchart describes different steps that were followed in order to identify the circular object in the image. Figure 1

shows the flowchart of steps. Firstly the reference image was read which contained objects of different shapes. This cluttered image is used for the identification of the circular object in the image. Then the image is converted into the grayscale. The grayscale image is further converted into the binary image. This conversion of image from grayscale to binary is the most important step and which greatly defines the detection of the circular image. Then the radius of the circles are defines to be detected [20]. Then the circular objects are being detected using the modified algorithm through Circular Hough Transform (CHT). This method is quite efficient as it decreases the computational time and storage required for its implementation. And then in the last step finally, the circular objects are detected. All the steps given in the algorithm clearly defines the flow or process followed while identifying the circular objects.

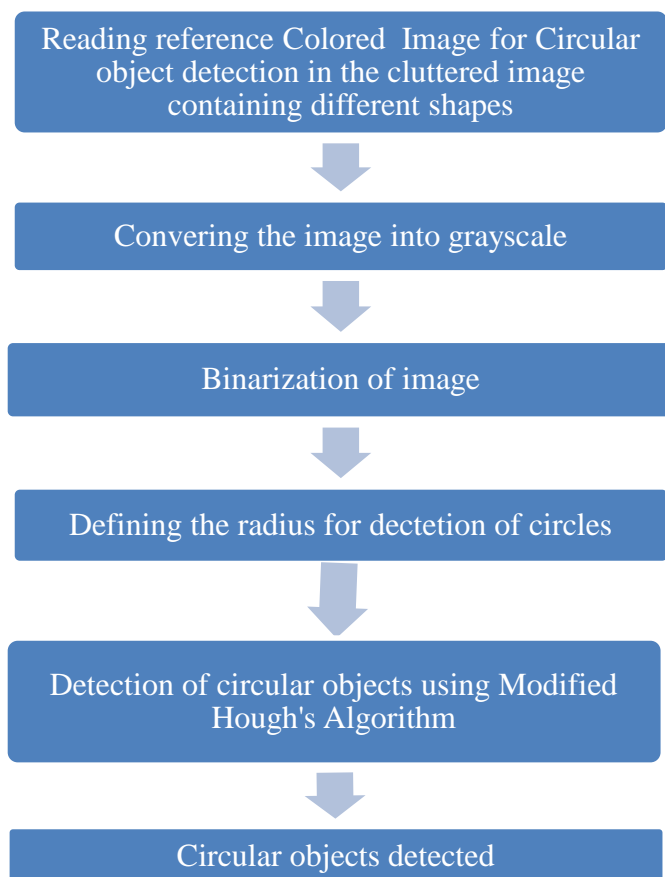


Fig. 1. Flowchart of method of detection

### III. RESULTS

The algorithm uses modified approach for the detection of circular objects. The following results show the different design steps that are followed. Figure 2 shows the input image from which the circular objects are to be detected. The image has different shapes in it. Figure 3 shows the result after converting the image to grayscale. Using the design flow the modified algorithm is compiled and run. Figure 4 shows the results as detection of circular objects from the

CGCIJCTR2019

www.cgijctr.com

different shaped objects in image with very less time. The circular objects identified in figure 4 are of different radius. All the circular objects present in the image are detected with very less computational and storage time. The objects which are marked are identified as circular objects while the others are not identified as they are not circular. The part of the circular object is also identified in the non-circular objects as they contain the circular images. In this way all the circular images are identified and detected whether fully as a complete circle or partially on the non-circular objects. This proves the accuracy and efficiency of the algorithm being used.



Fig. 2. Input cluttered image with different shaped objects



Fig. 3 . Image after conversion to grayscale.



Fig. 4 . Detection of Circular Objects.

#### IV. CONCLUSION

In this paper, a modified and novel method for detection of circular images is proposed and discussed which produces results in less computational time unlike the other methods which come different sorts of limitations. The discussed approach is able to produce results without requiring any additional hardware or any additional input image. As the hardware comes with its own complexities and therefore do not provide efficient solution. As the computing time of algorithm is less it can be connected with a hardware which can respond and perform required operation in real time after detection. The software version overcomes all the limitations. The algorithm can be used for various application including rejecting non circular shaped objects in an industry.

#### REFERENCES

- [1] U. M. Landau, "Estimation of a Circular Arc Center and its Radius," *Comput. Vision Graph. Image Process*, vol. 38, 1986, pp. 317–326.
- [2] J. F. Crawford, "A non-iterative method for fitting circular arcs to measured points," in *Nucl. Instru. Methods Phys. Research*, vol. 211, 1983, pp. 223–225.
- [3] V. Karim`aki, "Effective circle fitting for particle trajectories," in *Nucl. Instru. Methods Phys. Research*, vol. A305, 1991, pp. 187–191.
- [4] A. Thom, "A Statistical Examination of the Megalithic Sites in Britain," *J. Roy. Statist. Soc. Ser. A General*, vol. 118, 1955, pp. 275–295.
- [5] I. K`asa, "A circle fitting procedure and its error analysis," *IEEE Trans. Instrum. Meas.*, vol. 25, Mar. 1976, pp. 8–14.
- [6] G. Coath and P. Musumeci, "Adaptive Arc Fitting for Ball Detection in Robocup," in *APRS Workshop on Digital Image Computing*, Brisbane, Australia, Feb. 2003, pp. 63–68.
- [7] T. J. Atherton and D. J. Kerbyson, "Size invariant circle detection," *Image and Vision Computing*, vol. 17, Aug. 1999, pp. 795–803.
- [8] D. J. Kerbyson and T. J. Atherton, "Circle Detection Using Hough Transform Filters," in *Image Process. Appl.*, 1995, pp. 370–374.
- [9] Kaur, Sanam Preet, and Manvinder Sharma. "Radially optimized zone-divided energy-aware wireless sensor networks (WSN) protocol using BA (bat algorithm)." *IETE Journal of Research* 61, no. 2, 2015, pp. 170-179.
- [10] Duda, R., Hart, P., "Use of the Hough transform to detect lines and curves in pictures", In *Comm. ACM.* 15(1), 1972, pp.11–15.
- [11] Sharma, Manvinder, Sohni Singh, Dishant Khosla, Sumeet Goyal, and Anuj Gupta. "Waveguide Diplexer: Design and Analysis for 5G Communication." In *2018 Fifth International Conference on Parallel, Distributed and Grid Computing (PDGC)*, IEEE, 2018, pp. 586-590..
- [12] Gupta, Anuj Kumar, Manvinder Sharma, Dishant Khosla, and Varinder Singh. "Object detection of colored images using improved point feature matching algorithm." *CENTRAL ASIAN JOURNAL OF MATHEMATICAL THEORY AND COMPUTER SCIENCES* 1, no. 1, 2019, pp.13-16.
- [13] Yip, R., Tam, P., Leung, D., "Modification of Hough transform for circles and ellipses detection using a 2-dimensional array", In *Pattern Recognition.* 25, 1992, pp.1007–1022.
- [14] Sharma, Manvinder, and Harjinder Singh. "SIW based Leaky wave antenna with Semi C-shaped slots and its Modeling, Design and parametric considerations for different materials of Dielectric." In *2018 Fifth International Conference on Parallel, Distributed and Grid Computing (PDGC)*, IEEE, 2018, pp. 252-258.
- [15] Pao, D.C.W., Li, H.F., Jayakumar, R., "Shapes recognition using the straight line Hough transform: theory and generalizaion", In *IEEE Transactions on Pattern Analysis and Machine Intelligence.* 14, 1992, pp.1076–1089.
- [16] H. Sp`ath, "Least-Square Fitting by Cirles," *Computing*, vol. 57, 1996, pp. 179–185.
- [17] N. Chernov and C. Lesort, "Least squares fitting of circles and lines," to appear in *Journal of Mathematical Imaging and Vision*.
- [18] R. O. Duda and P. E. Hart, "Use of the Hough Transform to Detect Lines and Curves in Pictures," *Comm. ACM*, vol. 15, 1972, pp. 11–15.
- [19] Manvinder Sharma\* and Harjinder Singh, "Substrate Integrated Waveguide Based Leaky Wave Antenna for High Frequency Applications and IoT", *International Journal of Sensors, Wireless Communications and Control*, 2019.
- [20] M. Berman and D. Culpin, "The Statistical Behaviour of Some Least Squares Estimators of the Centre and Radius of a Circle," *J. Roy. Statist. Soc. Ser. B Stat. Methodol.*, vol. 48, Oct. 1986, pp. 183–196.